

Canteen Campus Göttelborn (HTW Saar)

Lyna Weiersmüller

In the modern ambience of the refectory on the Göttelborn campus, a vegetarian menu and a full menu are available to guests every day from Monday to Friday.



the building of the refectory Göttelborn from the front

Offer

The cafeteria offers a choice of a meat-based and a vegetarian menu with soup, salad and dessert, as well as tarte flambée, pizza and casseroles. For the small appetite there are baked goods from the Demeter bakery Sander, fresh sandwiches, chocolate bars, soft drinks and coffee.

For a complete meal (appetizer, main course, dessert) you have to plan about 4€.

It is possible to pay with the HTW Saar student card or in cash.

The current menu for HTW Göttelborn can be found [here](#).



the Mensa Göttelborn has large windows that offer a panoramic view of the campus

Opening hours

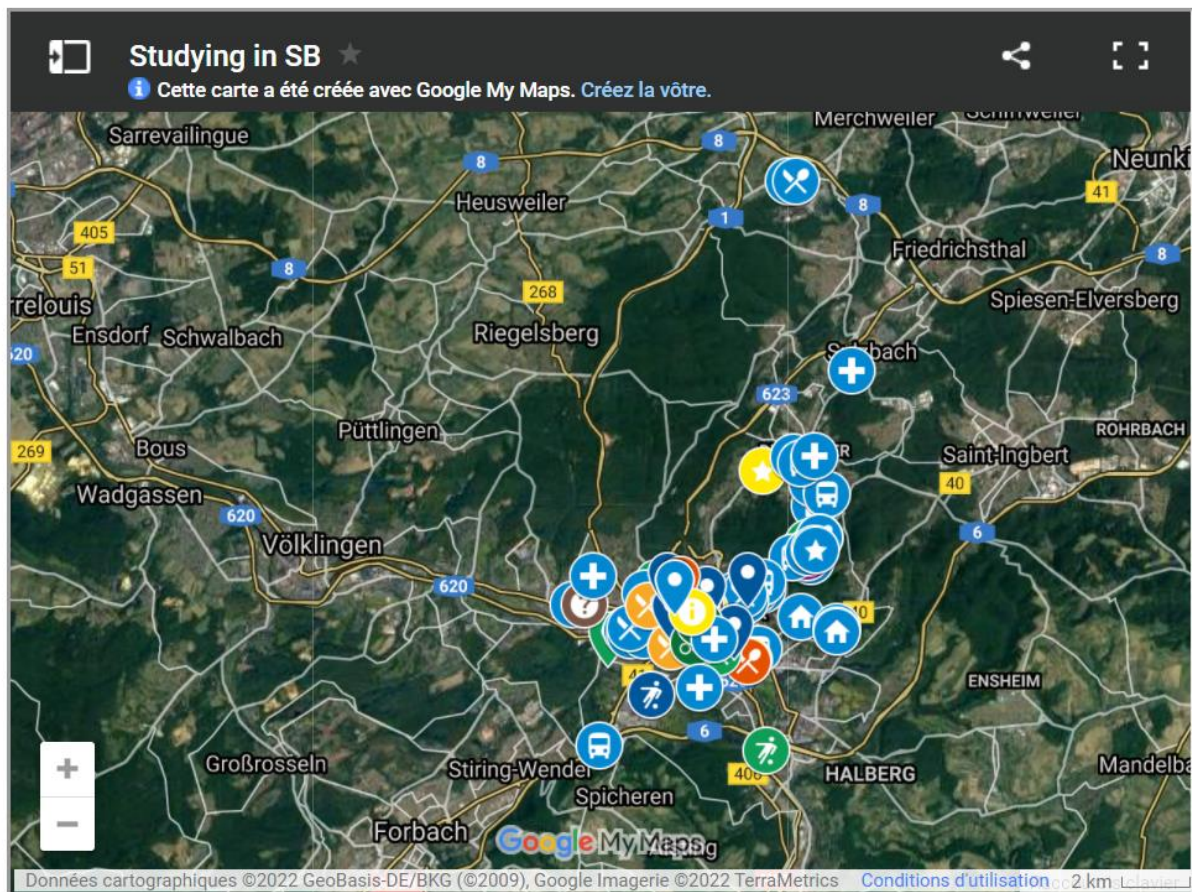
he cafeteria is open Monday through Thursday from 7:00 a.m. to 3:30 p.m. and Fridays from 7:00 a.m. to 3:00 p.m.; hot lunch is available daily from 12:30 p.m. to 2:00 p.m.



View of the Göttelborn campus from the glass windows of the refectory

Location

You can find the exact location of Mensa Göttelborn using the geographical coordinates (GPS), plus code and w3w coordinates below.



GPS: 49.343163,7.034047

Plus Code: 82VM+7J7

w3w: [///gateways.clunked.premise](https://gateways.clunked.premise)

The bus stop “Campus, Göttelborn” is located 30 meters from the refectory and is served by bus lines 172, 173, 301 and 353.

For motorists, there are numerous free parking facilities on campus. A parking lot is located 50 meters from the Mensa.

More information about Campus Göttelborn and transport connections can be found [here](#).

The refectory is accessible for wheelchair users.

Tips

Outside of Mensa opening hours, a student kitchen at the back of the hall will serve you, equipped with a vending machine for soft drinks and coffee, as well as snacks. The refrigerator, sink, kettle, and microwave can be used independently and kept clean; the oven and stove are turned off for fire safety reasons.

Further alternatives are offered by the nearby Cafécantine Flöz – the old coffee kitchen of the Göttelborn mine – 190m away and the supermarkets Netto (1.3km), Rewe (1.6km), Lidl and Aldi (1.9km).

Corona Information

Due to the current health situation, the canteen is only offering take-out meals.

The interior seating is not available at this time.